

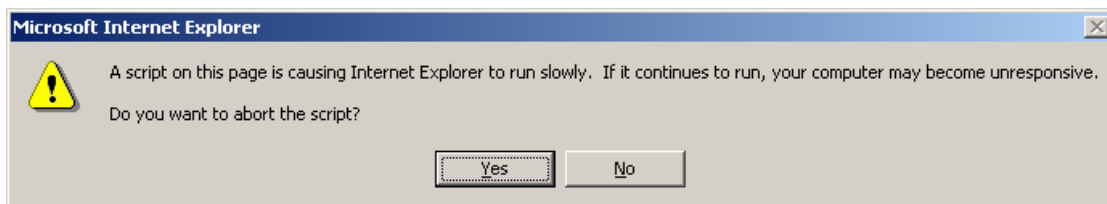
WorkPlace Pro Utilities Faster Navigation Trees

Version 1.1 (Release 9)

Overview

The Navigation Tree system included as part of the *DemoR2* application in WorkPlace Pro provides the user with an easy to use, logical structuring of their facility. It becomes increasingly more useful as the size of the project grows, especially when the WorkPlace Pro Utilities Tree Builder Utility is used to import the application from the Niagara station and automatically create the required JavaScript file (*treeloader.js*) that the tree uses to build itself.

There is a problem, however, as the size of the trees get larger. The time it takes for the client browser to initially load a large tree increases in direct proportion to its size. Trees with a significant number of nodes can cause the customer's site to seem to freeze – taking minutes to load and causing Microsoft Internet Explorer to warn the user that the script might hang their computer and suggesting that they abort it:



Smartware Technologies has resolved these problems by creating an updated version of the other JavaScript file that contains the code for creating trees (*tree.js*). To install the update, simply copy our new version of this file over the old one on any station's local library. No other modifications are required whatsoever.

- Will work anywhere – Enterprise Server, JACE or UNC.
- Will work with any navigation tree based on these *DemoR2* files, regardless of whether the *treeloader.js* file was created by hand or by the WorkPlace Pro Utilities Tree Builder Utility.

This new version of *tree.js* is available as part of the latest release of our WorkPlace Pro Utilities package. If you are already using this program, simply download and install the latest version from our web site and run it. The new version of *tree.js* will be installed into the TreeLoader subdirectory of the WorkPlace Pro Utilities directory ("C:\Program Files\WorkPlace Pro Utilities").

If you do not yet have the WorkPlace Pro Utilities, it is available free to Invensys TIP members, or can otherwise be purchased directly from Smartware Technologies, Inc. Simply contact us at (716) 213-2222 or at techsupport@smartwaretech.com.

You can find more information about the Tree Navigation system and how to integrate it into your applications in the *Niagara Web Solutions Guide (Chapter 5, DemoR2 Navigation)* and in the *WorkPlace Pro Utilities User's Guide*.

All material is Copyright © 2003 Smartware Technologies, Inc. All rights reserved.

WorkPlace Pro is a trademark of Tridium, Incorporated